

JOIN US AT THE
MARCH AND RALLY
SATURDAY
18 OCTOBER



Briefing for New Covent Garden coach park

Coaches for the TUC demonstration cannot drop off or pick-up passengers in Central London as there is both insufficient parking and a strong risk of grid lock caused by coach congestion.

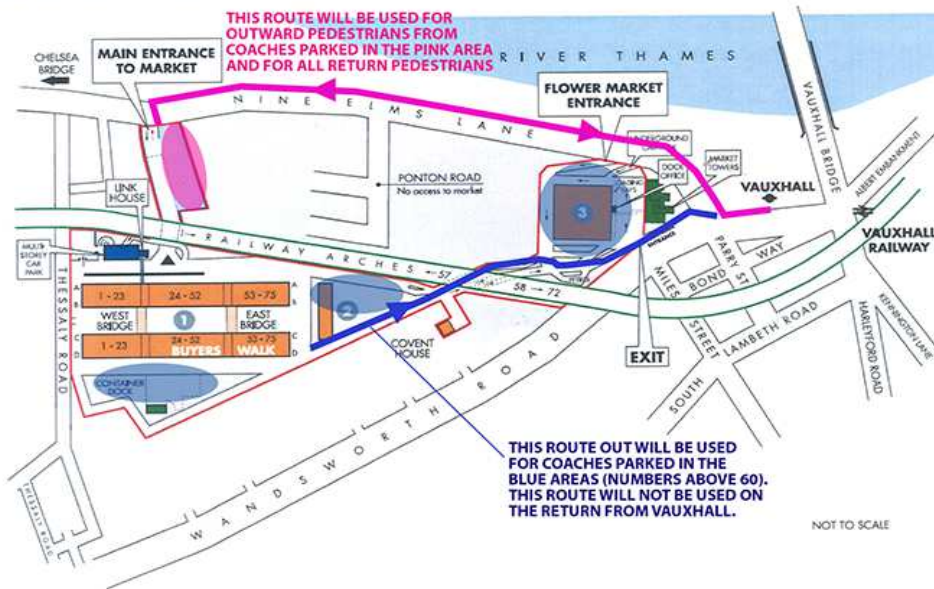
Coaches are therefore parking on one of three coach parks organised by the TUC. This will mean people will need to use public transport between the coach park and the demonstration. While this will make the journey more complicated, it is likely to be quicker as you can travel much more quickly through central London by tube than by coach.

This briefing is for passengers in coaches using the New Copvent Garden coach park.

At New Covent Garden

Vauxhall tube and rail station is a short and easy walk from New Covent Garden coach park.

New Covent Garden Market

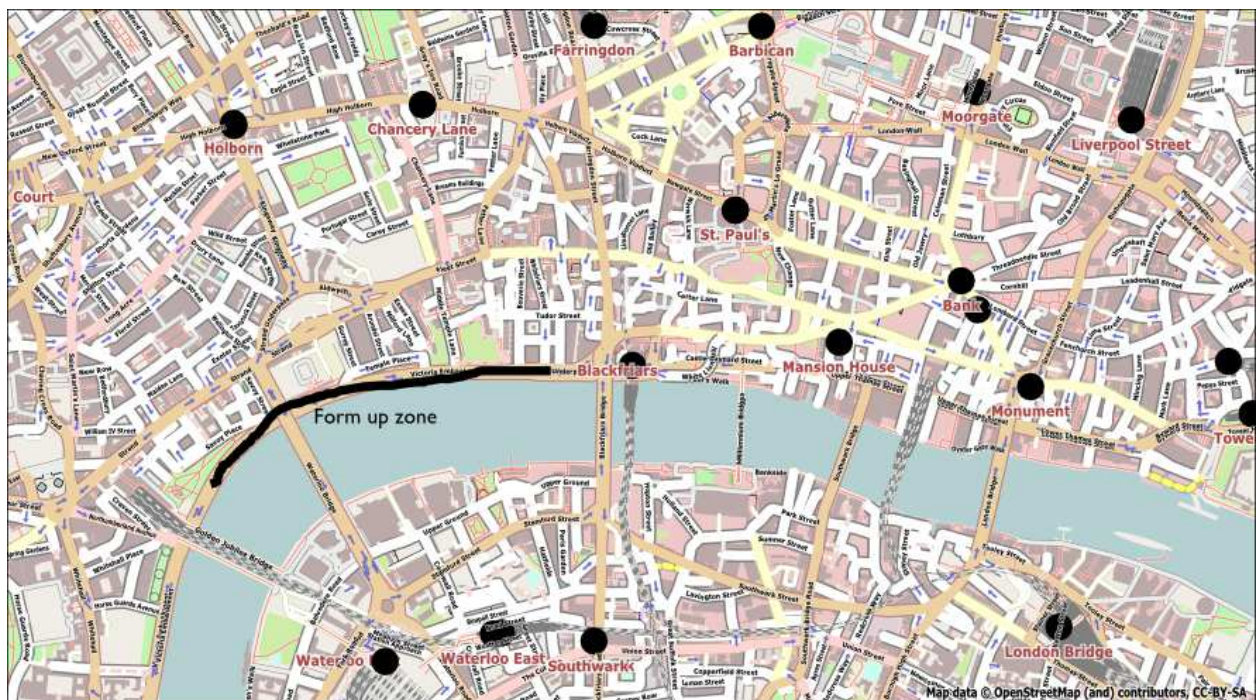


At Vauxhall marchers who do not have Oyster cards can now use contactless credit and debit cards to pass through ticket barriers both for overground (national rail) and underground services. This method will ensure that you are charged for the cheapest ticket option. Then you can either:

- The best route by public transport is to get one of the frequent overground trains to Waterloo then walk across Blackfriars Bridge. But Vauxhall station is currently undergoing modernisation and ost platforms are reached by flights of stairs. There is a lift but it is has a reputation for being unreliable.
- The easiest route is walk along the river (Thames Path) to Blackfriars Bridge and cross the river (about 3km – about 20 minutes walk for a reasonably fit person.) Head towards Vauxhall and look for Thames Path signs.
- get a Victoria Line underground train to Victoria and change there for the District and Circle line to Blackfriars
- catch a 77 bus from Vauxhall bus station to Waterloo. Buses are likely to be slow but are wheelchair accessible.

To join the demonstration

- From Blackfriars station walk along Embankment.
- From Waterloo station you need to cross Blackfriars Bridge. This is best reached along Stamford Street.



Here is a Google map showing more detail. <https://goo.gl/maps/dftLo>

Getting back to Vauxhall

Marchers will need to return to Vauxhall by tube or bus.

The easiest way is to get the Victoria line from Green Park. This means leaving from the south of the park (the entrance by which marchers come into the Park) and walking back up Piccadilly. Whilst Green Park has step-free access, Vauxhall does not.

While the tube will be far the best route, buses may be more accessible for some. Buses 2, 36 and 436 go from stop F in Duke of Wellington Place to Vauxhall. You can see detailed map of bus services in this area at <http://www.tfl.gov.uk/cdn/static/cms/documents/bus-route-maps/hydeparkcorner-a4-260914.pdf>

